

# IBM Consulting

## Campus Hire Openings



登入IBM Career Website: <https://www.ibm.com/tw-zh/employment/> · 搜尋各職缺右下角職缺代碼申請！

### Associate Business Consultant

Analyze challenges and opportunities. Provide innovative business strategies

452533BR

### Associate Data Scientist

Uncover hidden stories in data. Find patterns in the numbers!

452539BR

### Associate Package Consultant - CRM/Marketing - ERP/SCM/HR Solutions

Design/build/operate enterprise package solutions including but not limit to CRM/Marketing platforms, or ERP, SCM, or HRM systems for constructing clients' business process & management

480935BR

480937BR

### Associate Application Consultant

Perform technical activities, apply process and domain knowledge, fulfill business and technical requirement

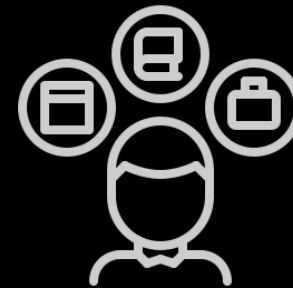
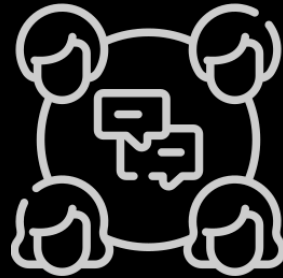
480939BR

### Application Developer

Design, develop or re-engineer software applications to improve clients' business

480940BR

# Application Process



**1** Submit  
CV

**2** Online  
Assessment

**3** Career  
Day

**4** Dept.  
Interview

**5** Select for  
Offer

Cut Day:

**Due Jan. 3, 2022**

Different assessments  
are required according  
to job roles.

**Late Jan., 2022**

**Mid Feb., 2022**

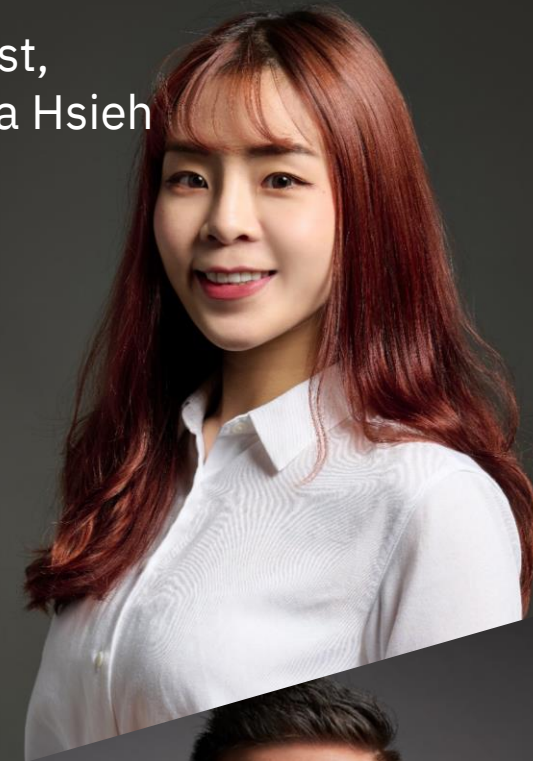
**Mar, 2022**

# 2022 IBM 校園徵才線上說明會

Via



Host,  
Ada Hsieh



Host,  
YY Tsai



開發人才專場  
Application Developer

18:30 – 20:00  
Wed., Dec. 15



商業顧問/資料科學家專場  
Associate Business Consultant  
Associate Data Scientist

18:30 – 20:00  
Fri., Dec. 17



套裝軟體顧問/系統開發顧問專場  
Associate Package Consultant  
Associate Application Consultant

18:30 – 20:00  
Wed., Dec. 22

